

**Unit I Spiral Exam – World War II**  
**(75 points total)**

***PLEASE DO NO WRITE ON THIS TEST***

DIRECTIONS – Please answer the following multiple-choice questions with the best possible answer. No answer will be used more than once. (45 questions @ 1 point each = 45 points)

- 1) All of the following were leaders of totalitarian governments in the 1930's and 1940's except:
  - a. Joseph Stalin
  - b. Francisco Franco.
  - c. Benito Mussolini
  - d. Neville Chamberlain.
  
- 2) In what country was the Fascist party and government formed?
  - a. Italy
  - b. Japan
  - c. Spain
  - d. Germany
  
- 3) The Battle of Britain forced Germany to do what to their war plans in Europe in 1942?
  - a. Join the Axis powers.
  - b. Fight a three-front war.
  - c. Put off the invasion of Britain.
  - d. Enter into a nonaggression pact with Britain.
  
- 4) The Nazis practiced genocide toward Jews, Gypsies, and other “undesirable” peoples in Europe. What does the term “genocide” mean?
  - a. Acting out of anti-Semitic beliefs.
  - b. Deliberate extermination of a specific group of people.
  - c. Terrorizing of the citizens of a nation by a government.
  - d. Killing of people for the express purpose of creating terror.

- 5) The term “blitzkrieg” was a military strategy that depended on what?
- A system of fortifications.
  - Out-waiting the opponent.
  - Surprise and quick, overwhelming force.
  - The ability to make a long, steady advance.
- 6) In an effort to avoid a second “world war”, when did the Britain and France adopt a policy of appeasement toward Germany?
- Before the war began.
  - When they declared war.
  - When the United States declared war.
  - After France was invaded and divided.
- 7) The United States entered World War II as a direct result of what?
- The attack on Pearl Harbor.
  - The invasion and division of France.
  - The invasion and division of Poland.
  - Attacks on U.S. ships in the Atlantic.
- 8) Which of the following was a false promise from Hitler not to take any more land in Europe?
- The Munich Pact
  - The Atlantic Charter
  - The Lend-Lease Act
  - The Treaty of Versailles
- 9) Which of the following matches a nation with that it invaded in the 1930s—before World War II was declared?
- Italy—Czechoslovakia
  - Italy –Ethiopia
  - Soviet Union –Ireland
  - Japan--the United States
- 10) Which nations came to be known as the Axis powers after they signed a mutual defense treaty in 1940?
- Germany, Japan, and Italy
  - Germany, Japan, and Spain
  - Germany, Italy, and Austria
  - Germany, Italy, and the Soviet Union

- 11) What was the meaning of the Japanese term “kamikaze”?
- a. “divine wave”
  - b. “holy wind”
  - c. “divine wind”
  - d. “holy war”
- 12) The Axis powers’ alliance worried Franklin D. Roosevelt because he saw that the United States, if drawn into the war, would have to
- a. Join the Allies.
  - b. Fight on U.S. soil.
  - c. Fight on two oceans.
  - d. Take in millions of refugees.
- 13) In following a policy of appeasement, Britain and France were taking what controversial action(s)?
- a. Declaring war on Germany.
  - b. Giving in to Hitler’s demands.
  - c. Entering into a formal defense alliance.
  - d. Pressuring the United States to enter the war.
- 14) The title of Hitler’s book, *Mein Kampf*, in English means what?
- a. “Well-Being.”
  - b. “My Country.”
  - c. “My Struggle.”
  - d. “Master Race.”
- 15) Hitler’s main method for achieving “*lebensraum*” or “living space” for the German people was to do what?
- a. Demand dictatorial power.
  - b. Attack Jews.
  - c. Form a secret police force.
  - d. Conquer other countries.

16) Which of the following was the leader of Japan's dictatorial government during the 1930's and 1940's?

- a. Adolph Hitler
- b. Francisco Franco
- c. Benito Mussolini
- d. Hideki Tojo

17) The Munich Conference was held to address the problem of a German threat to which nation?

- a. Poland.
- b. Hungary.
- c. Austria.
- d. Czechoslovakia.

18) Which of the following features did Nazi society stress to its citizens?

- a. Nationalism
- b. Isolationism
- c. Individual rights
- d. A classless society

19) The Weimar Republic was the post-World War I government of what European country?

- a. France.
- b. Russia.
- c. Poland.
- d. Germany.

20) *Il Duce* was the title of which of the following totalitarian leaders of World War II Europe?

- a. Josef Stalin
- b. Adolf Hitler
- c. Haile Selassie
- d. Benito Mussolini

21) Which country invaded Rhineland in 1936, touching off a series of events that would eventually lead to the start of World War II?

- a. Italy
- b. Japan
- c. Germany
- d. the Soviet Union

22) Which country invaded China in 1938 as part of a mass campaign of territorial expansion?

- a. Italy
- b. Japan
- c. Germany
- d. The Soviet Union

23) The Germans first successfully used the blitzkrieg tactics in an attack on what eastern European country, which helped to also set off World War II?

- a. France.
- b. Poland.
- c. Finland.
- d. The Soviet Union.

24) Who was General Charles de Gaulle?

- a. The French general who negotiated France's terms of surrender
- b. The prime minister of France before World War II
- c. The prime minister of the puppet government in southern France during World War II
- d. The leader of the French government-in-exile and the French during World War II

25) Which of the following technologies for the British helped to give them an advantage in the fighting of the Battle of Britain?

- a. Radar.
- b. Enigma code.
- c. British morale.
- d. More aircraft.

26) What technological development (originally discarded by the Western powers, but utilized by the Japanese) helped make the attack on Pearl Harbor possible?

- a. Attack submarines
- b. Heavy bombers
- c. Accurate radar
- d. Aircraft carriers

27) Who takes credit for and created the plan for the attack on the US naval base at Pearl Harbor?

- a. Hideki Tojo
- b. Emperor Hirohito
- c. Isoroku Yamamoto
- d. Ichiro Suzuki

28) Built following the destructive conclusion to the First World War and supported by a massive propaganda campaign, what was the intended purpose of the Maginot Line?

- a. To protect France from German invasion
- b. To protect Germany from Austrian invasion
- c. To protect France from Italian invasion
- d. To protect Britain from German invasion

29) Which of the following statements most accurately reflects Roosevelt's feelings toward the events in Europe prior to 1941?

- a. Agreed with the isolationists and promoted an isolationist policy.
- b. Wanted to help the Allies, but had to appease U.S. citizens who opposed the war.
- c. Wanted to avoid the war because he did not see it as a threat to the United States.
- d. He did not understand the position of isolationists and was eager to join the war.

30) What was the Lend-Lease Act?

- a. A statement of war aims compiled by Roosevelt and Churchill
- b. A nonaggression pact between Germany and the Soviet Union
- c. A policy allowing the president to provide arms to certain foreign countries
- d. An order to shoot German U-boats on sight

31) What was the name given by Hitler to his supposed "master race"?

- a. *Uebermenschen*
- b. *Aryans*
- c. *Untermenschen*
- d. *Einsatzgruppen*

32) Which of the following methods did the German Schutzstaffel (SS) employ to deal with those considered “undesirables” in Nazi Germany or Nazi-controlled areas?

- a. Death camps
- b. Deportation
- c. Concentration camps
- d. All of the above

33) What phrase was used by the Supreme Court to justify internment of Japanese-Americans following the attack on Pearl Harbor?

- a. “Military necessity”
- b. “Military security”
- c. “National defense”
- d. “Guaranteed security”

34) The strategy of “island hopping” in the Pacific, which was developed by a joint US Army-Navy command, involved Allied attacks on what?

- a. All Japanese-held islands.
- b. All islands within 500 miles of Japan.
- c. Only islands that were not well defended and offered strategic advantages.
- d. Only islands that were Japanese strongholds with fresh water supplies.

35) What legal means did the US government / President Roosevelt use to issue the internment of Japanese-Americans during World War II?

- a. Signed a bill
- b. Passed a law
- c. Issued an executive order
- d. Proclaimed a national holiday

36) Who was the supreme commander of the Allied forces in Europe during World War II, much to annoyance of our British allies?

- a. George Patton
- b. Erwin Rommel
- c. Bernard Montgomery
- d. Dwight D. Eisenhower

37) Knowing that the Nazis were expecting an invasion of Europe at some point, what region of France was chosen for the D-Day invasion?

- a. Calais
- b. Normandy
- c. Belgium
- d. Caucasus

38) Following the Battle of Bataan and the Japanese invasion of the Philippines, who went on the Bataan Death March, and why?

- a. Japanese soldiers, because they refused to surrender
- b. Allied prisoners of war, because the Japanese forced them to
- c. Allied soldiers, because it was essential to the success of the "island-hopping" strategy
- d. Chinese civilians, because they were forced off their land by the Japanese invasion

39) What is the Allies' codename for the invasion of Nazi-occupied France?

- a. "Operation Overlord"
- b. "Operation Torch"
- c. "Operation of Barbarossa"
- d. "Operation Cobra"

40) What town was American troops (like the 101<sup>st</sup> Airborne Brigade) defending during the Battle of the Bulge, at one point completely cut off from the rest of the Allied army?

- a. Paris
- b. Antwerp
- c. Calais
- d. Bastogne

41) Known as the "Spartan General", this general commanded the British forces in North Africa during World War II?

- a. Eisenhower
- b. Bradley
- c. Patton
- d. Montgomery



42) What is the codename for the Allied invasion of North Africa, where American troops got their first taste of action against German / Axis forces?

- a. "Operation Overload"
- b. "Operation Cobra"
- c. "Operation Torch"
- d. "Operation Camel"

43) What are the German troops in North Africa who became legendary for their ability to fight in hostile desert settings?

- a. *Luftwaffe Afrikaner*
- b. *Wehrmacht Afrikaner*
- c. *Afrika Korps*
- d. *Afrika Staffel*

44) Probably one of the most respected German generals of the European conflict, what was Erwin Rommel's nickname?

- a. "desert camel"
- b. "desert shadow"
- c. "desert fox"
- d. "desert gecko"

45) Who created the theories that led to the atomic bomb and the creation of the US Manhattan Project?

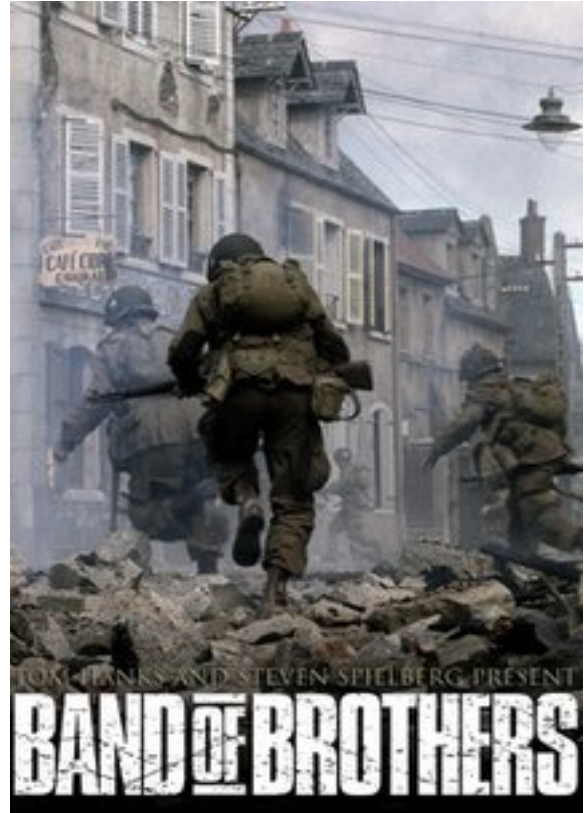
- a. Albert Einstein
- b. Enrico Fermi
- c. J. Robert Oppenheimer
- d. Warner von Braun

## Map Section – Part I: European Theater

Great Britain	Czechoslovakia	Rome	North Sea
Moscow	Warsaw	Germany	Spain
Adriatic Sea	Switzerland	English Channel	Italy
Paris	Poland	East Prussia	Latvia
Norway	Mediterranean Sea	Finland	Austria
London	Iceland	Greece	Albania

DIRECTIONS – Use the word bank and process of elimination to locate the following items on the attached map. Each item will only be used once. (1 point each = 10 points)

- 1) Czechoslovakia
- 2) Finland
- 3) Warsaw
- 4) Moscow
- 5) Austria
- 6) North Sea
- 7) Adriatic Sea
- 8) East Prussia
- 9) Poland
- 10) Norway



## Map Section – Part II: Pacific Theater

Coral Sea	Hawaiian Island	Formosa	China
Aleutian Islands	South China Sea	Mongolia	Korea
Tokyo	Midway Island	Manchuria	Japan
Soviet Union	Indian Ocean	Thailand	Burma
The Dutch East Indies	Bering Sea	Manila	Iwo Jima
Nanking	Solomon Island	Australia	Okinawa

DIRECTIONS – Use the word bank and process of elimination to locate the following items on the attached map. Each item will only be used once. (1 point each = 10 points)

- 11) Formosa
- 12) Australia
- 13) Manchuria
- 14) Korea
- 15) South China Sea
- 16) Indian Ocean
- 17) Aleutian Islands
- 18) Japan
- 19) Bering Sea
- 20) Solomon Islands



## Essay Questions

DIRECTIONS – Please select **ONE (1)** of the following essay topics to complete your exam on a separate piece of paper, making sure the questions are answered fully and in complete sentences. (1 question @ 10 points = 10 points)

- 1) Who is to blame for Pearl Harbor? Following the deadly attack on the US naval base at Pearl Harbor, Hawaii, many Americans asked the questions of whether or not someone was the blame (other than the Japanese, of course) for the deadly surprise attack, such as US President Franklin Roosevelt. To complete this prompt, address the following points:
  - Why was the attack on Pearl Harbor a significant event in American history? Explain.
  - In your opinion, what caused conspiracy theories about this event to grow? Explain.
  - In your opinion, do you believe President Roosevelt was to blame for the attack on Pearl Harbor? Why or why not? (Cite three [3] pieces of specific evidence)
  - Should the conspiracy theorists be proven correct, how might the discovery of Roosevelt's role in the Pearl Harbor attack change the course of US / World history? Explain.
  
- 2) Japanese Internment: During the early months of the Pacific War, Japanese-Americans (viewed with suspicion by many Americans) were rounded up and "interred" in isolated camps in the American Southwest. To complete this prompt, address the following points:
  - Why were Americans so suspicious / scared of Japanese-Americans in the aftermath of Pearl Harbor? Explain.
  - How did President Roosevelt justify such an action using his powers as President of the United States? How did Congress? How did the public? Explain.
  - Why did many natural / naturalized Japanese-Americans go along with the internment orders, even though it meant imprisonment, loss of property, etc.? Explain.
  - In your opinion, what lessons can we learn from the internment experience? What dangers should we be aware of? Explain.

3) Dr. Seuss and American Isolationism: During the early years of World War II, the United States remains neutral in the growing conflicts in Europe and Asia, much to the pains of some. To complete this prompt, address the following points:

- Despite President Roosevelt's desire to get into the war, the US was deeply isolationist. Explain why many Americans wanted to stay out of another war.
- One of the great political cartoon voices of the period was Dr. Seuss, the acclaimed children's author.



Looking at his cartoon to the right, does Dr. Seuss support American neutrality? What in the cartoon expresses that position? Explain.

- Despite America's deep opposition to war, what was one (1) of the ways that President Roosevelt still assist the Allies (particularly Britain) or helped to get American ready to entry into the Second World War? Explain your answer.